

Wellington County Modellers Exhibition



Sunday, MARCH 08, 2009
ROYAL CANADIAN LEGION Branch 234 Mcrae
919 YORK ROAD
GUELPH, ONTARIO

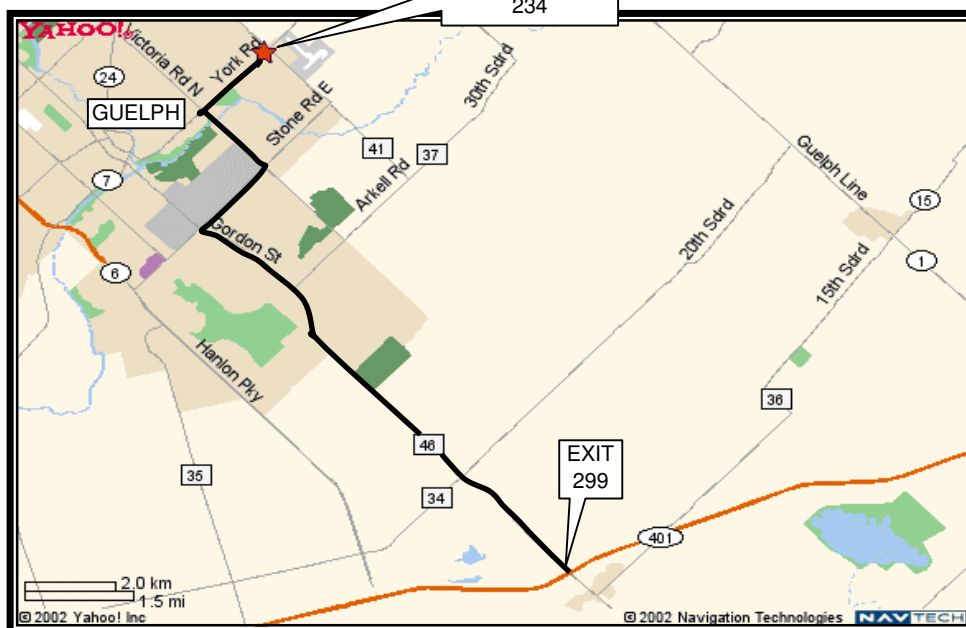
The Sprue.com

Home of the Guelph Plastic Modellers Group



Royal Canadian
Legion Branch
234

For driving directions go to
<http://maps.google.com> and type in
the address.



Chairman

Steve Johnson
519-766-4604
info@thesprue.com

Vendors

Rob Mephram
519-787-7851
robm@qto.net

Head Judge

Frank Portela
519-827-1887
bikesloth@rogers.com

AIRCRAFT

- A1 1/144 & SMALLER*
- A2 1/72 SINGLE ENGINE, PROP; AXIS*
- A3 1/72 SINGLE ENGINE, PROP; ALLIED*
- A4 1/72 MULTI ENGINE, PROP*
- A5 1/72 JET*
- A6 1/48 SINGLE ENGINE, PROP; AXIS*
- A7 1/48 SINGLE ENGINE, PROP; ALLIED*
- A8 1/48 MULTI ENGINE, PROP*
- A9 1/48 JET*
- A10 1/32 ALL TYPES*
- A11 MULTI-WING; RIGGED ALL SCALES*
- A13 ROTARY WING ALL SCALES*
- A15 CIVIL AND COMMERCIAL*
- A18 SCRATCHBUILT; MAJOR CONVERSION
- A19 AIRCRAFT DIORAMAS

ARMOUR

- B1 1/72 & SMALLER SOFTSKIN & ORDNANCE*
- B2 1/72 & SMALLER AFV*
- B3 1/35 OPEN TOP AFV*
- B4 1/35 FULLY TRACKED AFV; UP TO '45*
- B5 1/35 FULLY TRACKED AFV; POST '45*
- B6 1/35 NON-TURRETED AFV*
- B7 1/35 SOFTSKINS*
- B8 1/35 ARMoured CARS & HALF TRACKS*
- B9 1/35 ORDNANCE*
- B10 SCRATCHBUILT & MAJOR CONVERSION*
- B11 1/48 AXIS*
- B12 1/48 ALLIED*
- B14 MILITARY DIORAMAS

AUTOMOTIVE

- C1 COMPETITION; OPEN WHEEL*
- C2 COMPETITION; CLOSED WHEEL*
- C3 REPLICAS STOCK*
- C4 STREET ROD AND CUSTOM
- C5 MODIFIED LIGHT TRUCK
- C6 MOTORCYCLES*
- C7 HEAVY TRUCK*
- C8 SERVICE AND RESCUE*
- C11 1/19th & LARGER*
- C12 AUTOMOTIVE DIORAMAS

FIGURES

- D1 54mm & SMALLER; HISTORICAL
- D2 54mm & SMALLER; FANTASY
- D3 > 54mm; HISTORICAL
- D4 >54mm; FANTASY
- D5 MOUNTED FIGURES
- D6 BUSTS
- D7 VIGNETTES

SHIPS

- S1 POWERED WARSHIPS*
- S2 SUBMARINES*
- S3 RIGGED VESSELS*
- S4 CIVIL SHIPS*

MISCELLANEOUS

- M1 COLLECTIONS
- M2 CATCH 22
- M3 HISTORICAL SPACE*
- M4 SCI-FI/FANTASY SPACE*

JUNIOR (14 & under)

- J1 AIRCRAFT
- J3 MILITARY VEHICLES
- J4 FIGURES
- J5 CARS
- J7 TRUCKS, VANS, MOTORCYCLES
- J8 SPACE & SCI- FI
- J9 SHIPS

SPECIAL AWARDS

- Best Aircraft with a Storm Name
 - Best Tank in Winter Camo
 - Best White Civil Vehicle
 - Best Single Pilot Space / Sci-Fi
 - Best Figure/Vignette in Winter Dress
 - Best Winter Diorama
- ## BEST of AWARDS
- Best Aircraft
 - Best Armour
 - Best Automotive
 - Best Figure
 - Best Ship
 - Best Junior
 - Best Diorama
 - Best Out Of Box

Rules and Definitions

**Out of Box Awards will be awarded in each appropriate category. Only the kit parts can be used. You may not rescribe detail unless it is to restore lost detail from sanding. You may add antennae, seat belts and used alternate decals and Instruction sheets must be placed with the entry form to qualify.*

Categories may be split or combined at the Head Judges discretion. Every effort will be made to inform the participants if such an event were to occur.

In the interest of fairness and impartiality, members of the Guelph Plastic Modellers Group will not be entering the contest.

****The contest room will be closed to the public during judging****

First, Second, Third and Out-of-Box awards will be placed with the appropriate entries at time of judging. Special awards and Best of's will be announced and presented after the room re-opens. We request that all entries remain on the table until all awards have been given out.

SCHEDULE

- 9:00 am Contest Room Opens
- 9:30 am Vendors Room Opens
- 1:30 pm Contest Room Closes for Judging
- 4:00 pm Contest Room Opens
- 4:30 pm Awards Presentation
- 5:00 pm Closed

ADMISSION

- \$5 admission fee
- \$5 per entry to a maximum of \$20
- 14 and under free admission and entry fee